

## Product Registration

Register online at [PowderJack.com](http://PowderJack.com)



## 1-Year Limited Warranty

**IMPORTANT:** Refer to the Safety Information, Maintenance and Usage Instructions.

Powder Jack, LLC. warrants to the original registered owner that the product is free from defect in original parts and workmanship for 1 year. You must register your purchase online at [PowderJack.com](http://PowderJack.com).

Powder Jack, LLC. will repair or replace the product at its option free of charge if it is determined that the product has been properly maintained and that failure was not the result of misuse or abuse.

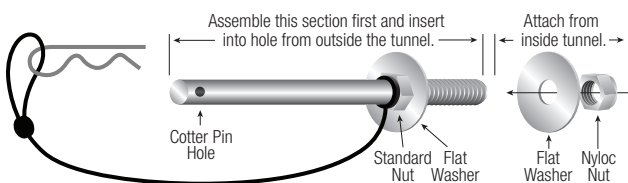
Powder Jack, LLC. disclaims any warranty for consequential damages where it is permitted to do so under applicable law. This warranty is in place of all other warranties of merchantability and fitness. In the United States and in Canada this warranty gives you specific legal rights. You may have other rights which vary from state to state and/or province. Where any term of this warranty is prohibited by law, said term shall be null and void, however the remainder of the warranty shall apply and remain in full force and effect.

For Warranty Returns, contact us at [PowderJack.com](http://PowderJack.com)

## Mounting Instructions

### For single pole (non-segmented) model

- Carefully choose a position for the jack body to mount to the tunnel - above the running board and toward the rear of the sled (for stability and clearance for your feet. The pole end will wedge into the foot well to stay secure.
- Mark and drill a 1/4" (6.35mm) size hole into the tunnel. (Make sure you don't damage anything on the inside of the tunnel like wiring, track or suspension.)
- Thread the standard nut onto the bolt and add one washer.
- Insert the bolt into the hole from the outside of the tunnel. (Put the pin in the end of the bolt to hold it.)
- Secure on the inside of the tunnel with the other washer and Nyloc nut - leaving at least one full thread showing past the nut. Tighten the standard nut.
- Slide the jack onto the bolt and secure with the small pin in the bolt hole.
- Advance the pole forward to secure in the foot well using the jack handle.
- Store the foot plate and large foot plate pin in a gear bag.





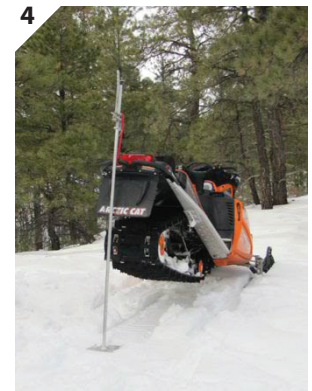
### IMPORTANT INFORMATION

*Refer to Safety Information, Maintenance and Usage Instructions on other side.*

## How To Use Your Powder Jack

**WARNING: Do not slide the jack mechanism off of the pole or it may come apart and lose essential parts.**

- 1 Attach the foot plate to the pole using the large clip. [For segmented pole models, first thread all pole sections together. The section with the round pin insert and hole goes at the bottom.]
- 2 Loop the nylon strap around bumper and place the jack and pole in a vertical position.
- 3 Squeeze the jack tab to slide the lifting mechanism along the pole. Lay the nylon strap over the grooved lip on the block.
- 4 Jack the sled straight up out of the trench, push the sled over sideways onto fresh snow. Release the jack by the tab, put the jack away and get back to riding!



Visit [PowderJack.com](http://PowderJack.com) for more information.

# Maintenance And Usage Instructions

WARRANTY MAY BE VOIDED IF YOUR JACK FAILS DUE TO IMPROPER USE OR MAINTENANCE.

## Do not use excessive force on the jack handle

The jack uses a 13 to 1 lift ratio - so 50 lbs. of pressure on the handle gives 650 lbs. of lift - that's plenty ya big brute!

If there is too much resistance, clear away snow from around your snowmobile. A little extra time and effort is better than breaking your fancy lightweight jack.

## If the jack mechanism stops sliding along the pole

- Over time, burrs on the pole will prevent the block from sliding freely up and down the shaft. Avoid extra deep burrs by clearing heavy snow from your track.
- Remove extra burrs with an emery cloth or similar weight sandpaper (or lightly run a flat file around the pole surface being careful not to file too much that it reduces the basic diameter of the pole).
- Blow off excess debris then apply a small amount of lightweight machine oil (like Liquid Wrench) to the pole with a cloth rag. Wipe the pole clean.

**TIP:** For a temporary fix in the field - hold the release tab down and run the jack assembly up and down the pole quickly while rotating the pole.

## If the jack is slipping down the pole

- Clear ice from the block mechanism. Try to warm it up against your engine or exhaust.
- Aluminum dust builds up in the jack mechanism and can cause it to stick or slip. Blow away excess dust while pressing the release tab and moving the mechanism up and down the pole. Apply lightweight machine oil at hinge points and between the tabs where the pole goes through the mechanism.

## If the segmented pole feels loose

You may need to periodically tighten the threaded sections if you are lifting and lowering multiple times.

## If the segmented poles will not come apart

- Apply lightweight machine oil to the threads periodically to keep them from sticking in the first place.
- Remove ice and snow from both female and male thread ends before screwing together.
- If the poles are stuck, knock one section on something hard (like your head... or sled bumper, whichever is harder) to break them loose.
- Try to warm it up against your engine or exhaust.
- Leather palm gloves help with grip and keep from tearing up your hands on any burrs that have formed.

## Have more questions or suggestions?

We get lonely stuck here in the office and would love to hear from you!

Call or email us by going to [PowderJack.com](http://PowderJack.com)

# Safety Information

**WARNING: This jack is designed to be *lightweight* and *compact*. Extra care must be taken to avoid damage to the jack, your snowmobile or yourself.**

**Please read and follow ALL instructions.**

- **Excessive pressure on the handle can bend or break parts.** DO NOT OVERLOAD your jack with too much weight or resistance. It should be easy to move the handle up and down. Clear snow from around the track if necessary.
- YOUR JACK IS DESIGNED FOR A SPECIFIC USE, which is to lift snowmobiles out of trenches in deep powder conditions.
- NEVER USE IN A GARAGE. The jack pole can slip on hard surfaces like concrete or plywood. And the snowmobile can tip over to the side as the jack was designed to do.
- WEAR GLOVES to protect your hands from burrs that form on the pole.
- DO NOT LEAVE GAPS when assembling (threaded segmented pole model) for strength and to reduce possibility of damage to parts.
- FASTEN THE STRAP SECURELY to your snowmobile and then place the loose end securely over the top groove of the jack mechanism.
- PLACE THE POLE IN A VERTICAL POSITION before lifting. It should not be angled towards or away from your snowmobile while lifting.
- NEVER WORK UNDERNEATH OR TO THE SIDE OF THE SNOWMOBILE. All persons should be clear of the snowmobile being raised, lowered, pushed, pulled or suspended.
- DO NOT PLACE JACK BASE ON TOP OF TRACK. Make sure the base is clear of the track before lifting to avoid damage from prying the track and bumper apart. Damage to the jack and your sled may result.
- PUT HANDLE IN UPRIGHT POSITION before tripping the holding tab to lower the load in case you need to readjust. If the sled is suspended in the air be very careful that you are not under or too close to the jack and sled. If possible to safely do so, you can try to manually apply upward lift resistance to the sled bumper so it doesn't drop down too quickly.
- DO NOT USE A BROKEN JACK. If any part of your jack fails to work properly, discontinue use and have it repaired or replaced.
- PAT YOURSELF ON THE BACK for actually reading all this safety information. Thank you!

## Refer-A-Friend

If you love your Powder Jack and want your friends to get their own damn jack, just go to [PowderJack.com/Refer-Friend](http://PowderJack.com/Refer-Friend).